



KAYDEN PLAN

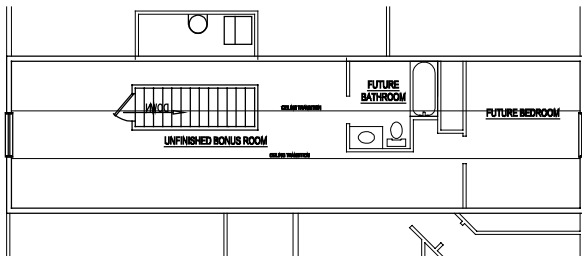
W/ CRAWL SPACE
SQUARE FOOTAGE

1545 Finished | 747 Unfinished | 2292 Total

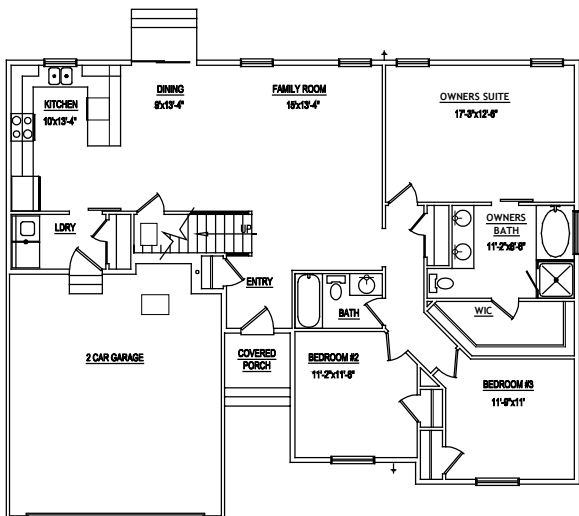
DIMENSIONS

52'-6" Width | 42'-0" Depth

OPTIONAL ELEVATION



UPPER FLOOR LAYOUT



MAIN FLOOR LAYOUT

PLEASE NOTE: Square footage and measurements noted are approximate. All images of exteriors and floor plans are artist's renditions and may vary from actual product. Plans are subject to change to comply with local city ordinances. Final placement of home on lot is done at sellers discretion. All information on this sheet is subject to change without notice.
2010 Series v1.0

© 2020 Page Drafting and Design Inc. All Rights Reserved. These plans are protected by federal copyright law. They may not be copied, reproduced, changed, or publicly displayed, in whole or in part, without first obtaining the express written permission of Page Drafting and Design. Federal law provides significant civil and criminal penalties for unauthorized copying, reproduction, public display, or adaptation of copyrighted works. The use of construction documents is also protected by state law. Unauthorized use of these drawings, in whole or in part, without the express written permission of Page Drafting and Design, is strictly prohibited.